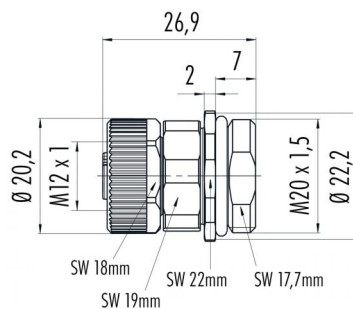


Product description	M12-T female panel mount connector, Contacts: 4, shielding is not possible, screw clamp, IP68, UL, VDE
Area	M12-T series 813
Order number	99 0634 500 04

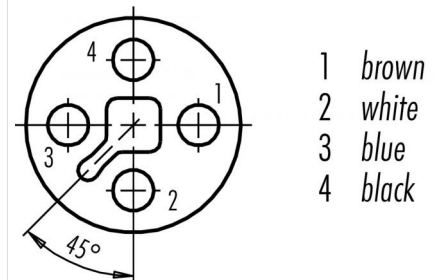
### Illustration



### Scale drawing



### Contact arrangement (Plug-in side)



You can find the assembly instructions on the next page.

## Technical data

### General values

Connector design	female panel mount connector
Connector locking system	screw
Termination	screw clamp
Wire gauge (mm)	max. 1.50 mm <sup>2</sup>
Wire gauge (AWG)	max. 16
Upper limit temperature	85 °C
Lower limit temperature	- 40 °C
Customs tariff number	85369010
Packaging Unit	100

### Cable data

Approval 1	UL
Approval 2	VDE

### Electrical values

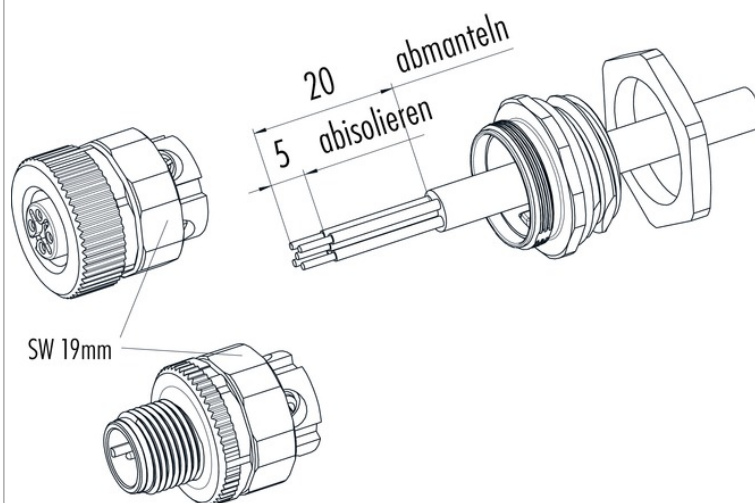
Rated current (40 °C)	12 A
Rated voltage	63 V
Rated impulse voltage	1500 V
Pollution degree	3
Overvoltage category	III
Insulating material group	II
EMC compliance	shielding is not possible
Degree of protection	IP68
Mechanical operation	> 100 Mating cycles

### Material

Contact material	CuSn (bronze)
Contact plating	Au (gold)
Contact body material	PA
Housing material	Zinc die-cast nickel-plated
REACH SVHC	CAS 7439-92-1 (Lead)

Product description	M12-T female panel mount connector, Contacts: 4, shielding is not possible, screw clamp, IP68, UL, VDE
Area	M12-T series 813
Order number	99 0634 500 04

### Assembly instructions / Panel cut-out



**Litzenquerschnitt**  
max. 1,5 mm<sup>2</sup> 4-polig

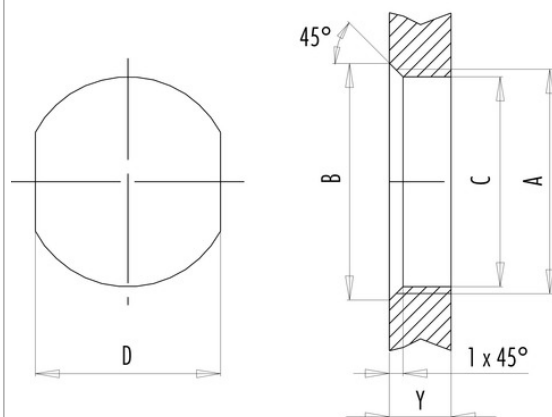
**Kontakteinsatz**  
4 x 90° verdrehbar

**Anzugsdrehmoment**  
SW 19 Mutter = 5 Nm M18 x 0,75  
M20 x 1,5 = 5 Nm

### Assembly instructions / Panel cut-out

With flats as anti-rotation device

With bore hole



Installation direction: o-ring sits on chamfer.

Thread	Measures			Tightening torque	
	B (mm)	C (mm)	D (mm)	Metal housing/ Positioning sleeve	Plastic housing/ Positioning sleeve
M16 x 1,5	17,0	16,1	13,5	1,25 Nm	1,25 Nm
M20 x 1,5	21,0	20,1	—	2 Nm	1,25 Nm

Thickness of wall Y (mm)		
Version	min (mm)	max (mm)
Fastened from back side	2	3,5
Front fastened	2	4,5
Screw clamp	2	3,5

Product description	<b>M12-T female panel mount connector, Contacts: 4, shielding is not possible, screw clamp, IP68, UL, VDE</b>
Area	<b>M12-T series 813</b>
Order number	<b>99 0634 500 04</b>

## Security notices

The connectors are designed for use in plant, control system and electrical equipment. The end user is responsible for checking whether the connectors are suitable for use in other applications.

Connectors with degree of protection IP 67 and IP 68 are not suitable for use under water. When used outdoors, the connectors must be separately protected against corrosion. For further information about IP degrees of protection refer to 'Technical support' in the Download Centre.